

# OUR LOCATIONS

## HEAD OFFICE

2nd Floor | Titan Court | 3 Bishop Square  
Hatfield | Hertfordshire | AL10 9NA

01707 226 501

## PLANT & HAULAGE DEPOT

Unit 1 | Smithers Farm | Guildford Road  
Rudgwick | West Sussex | RH12 3BX

01403 822 701

**24**  
HOUR **0330 123 5440**

info@prorailservices.co.uk  
www.prorailservices.co.uk



# Pro Rail Services

Plant & Haulage



**VOLVO 62T/M  
CHEESEWEDGE  
CRANE LORRY**

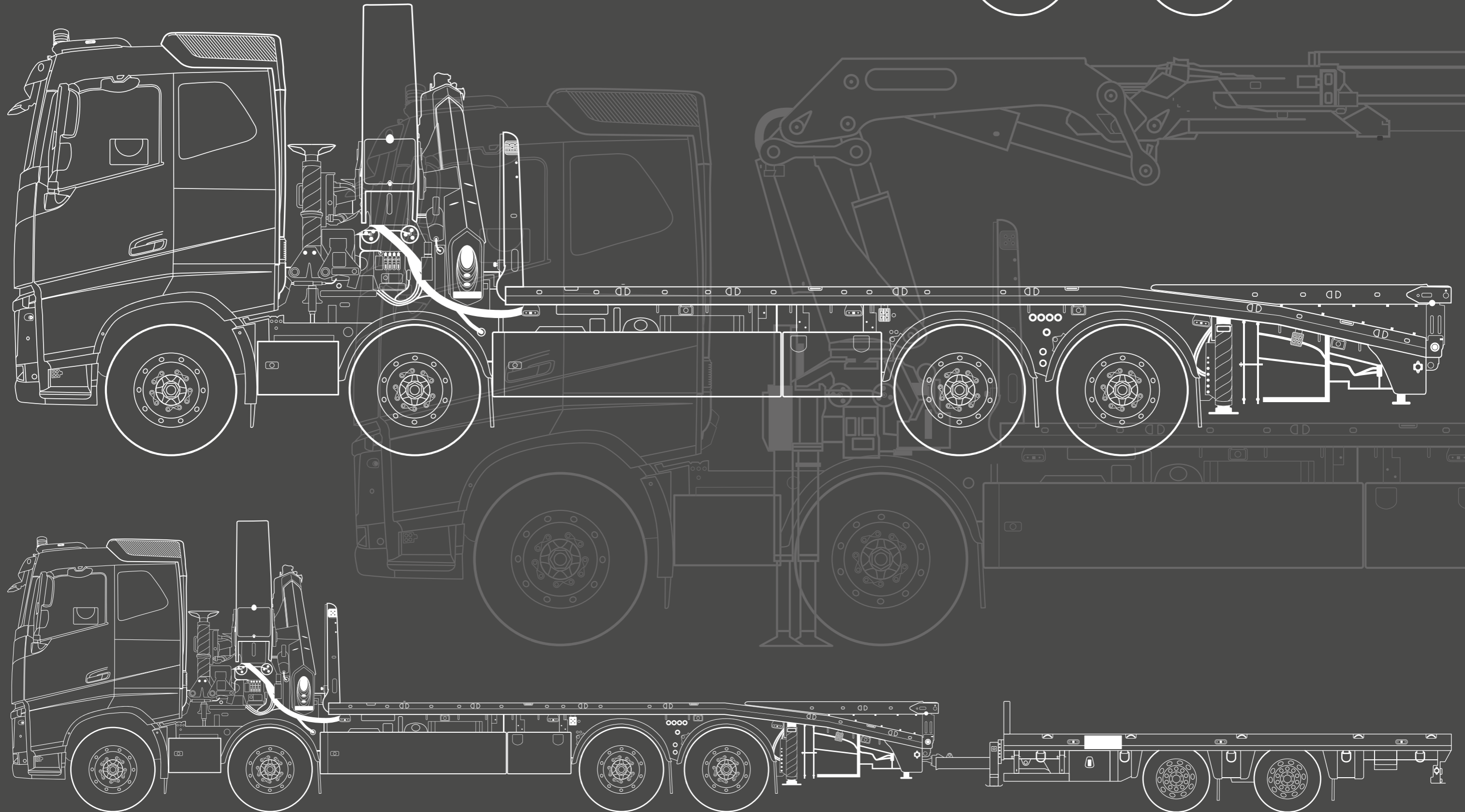


**VOLVO CHEESEWEDGE LORRY LOADER**

**CAPABLE OF 3000kg @ 16.1m REACH**

**FLATBED OR BEAVERTAIL • 9400kg PAYLOAD**

**DRAWBAR TRAILER • 8200kg PAYLOAD**





# VOLVO FH 8x2 PALFINGER PK 62002 EH CHEESEWEDGE CRANE LORRY

The first HGV to join our fleet is the Volvo FH460 8x2 Palfinger PK 62002 EH Cheese-wedge Crane Lorry. This lorry has been built to a very high specification and has all the latest safety features to ensure we go above and beyond the industry standard.

This lorry has been designed to carry out many duties and be a Swiss army tool when it comes to moving a wide range of equipment and materials. The crane fitted on the lorry is the Palfinger PK62002E which has exceptional lifting capabilities.

The Cheesewedge body on this lorry is where it comes into a world of its own. It is fitted with folding ramps to enable the truck to act as a flatbed or work as a plant beavertail body, which is very useful. The deck of the lorry is fitted with timbers & has rail wheel guidance sockets installed for carrying RRV trailers, as well as ISO locks for carrying cabins.

As with anything health and safety is taken very seriously here at Pro Rail Services, so we have installed Fall Arrest Bars/Straps and a side access ladder for when the driver requires to climb on the back of the lorry for loading/unloading and securing duties.

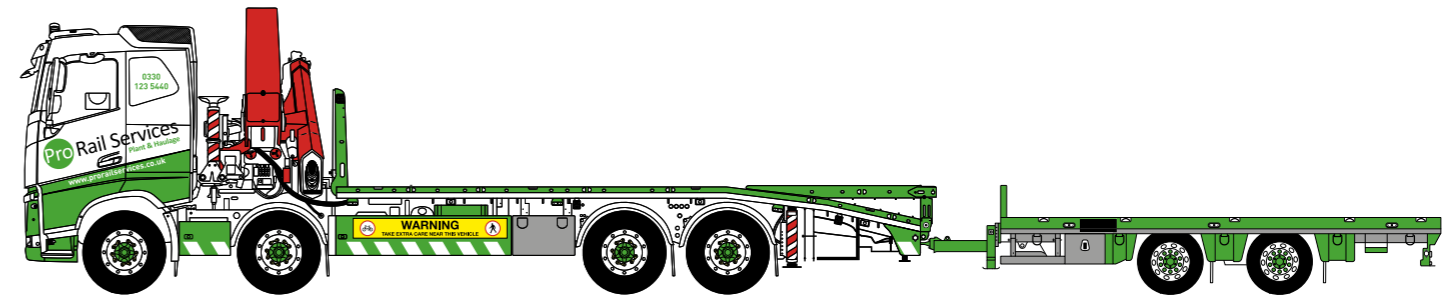
Our lorry is fitted with the very latest telemetry technology provided by Plant-i Ltd and enables us to have live tracking to ensure we are always kept up to date with the status of our vehicle and also for our customers to know exactly where their load is at all times.

To accompany our 8x2 we have a VGB coupler installed to enable us to tow our Twin Axle Chieftain Drawbar Trailer with a 5.3m long bed which can carry an additional payload of 8200kg.



## KEY FEATURES

CHEESEWEDGE BODY	FLAT BED OR PLANT BODY
FALL ARREST SYSTEM	FALL ARREST BARS / STRAPS - ACCESS LADDER
PAYLOAD	9400kg
LIFTING CAPACITY @ 4m	12500kg
LIFTING CAPACITY @ 16m	3050kg
HIGHWAYS CHAPTER 8 COMPLIANT	REG 65 FLASHING LED'S / WORKLIGHTS
FORS COMPLIANT	CAMERAS / SAFETY SIGNS / SIDE IMPACT BARRIERS



**ID: 009684**







Specialist Lifting Services

www.prorailservices.co.uk

PRO RAIL

FOR MORE INFORMATION OR TO DISCUSS YOUR REQUIREMENTS, CONTACT OUR HAULAGE TEAM:

01403 822 701

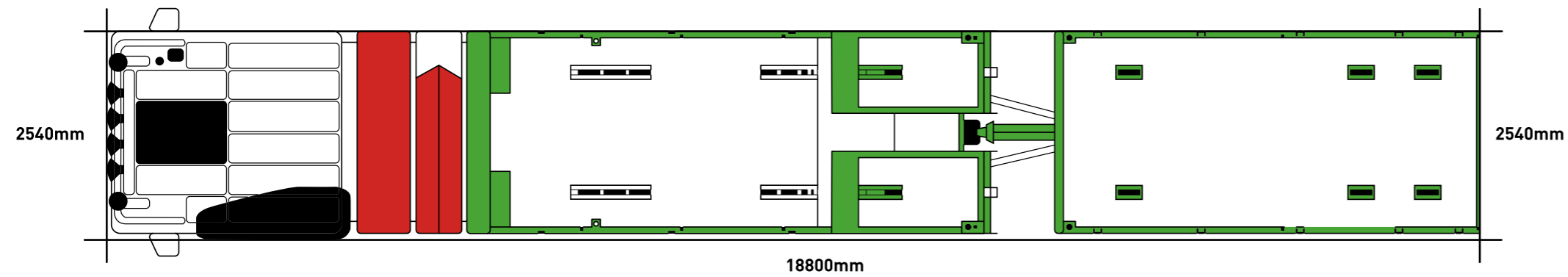
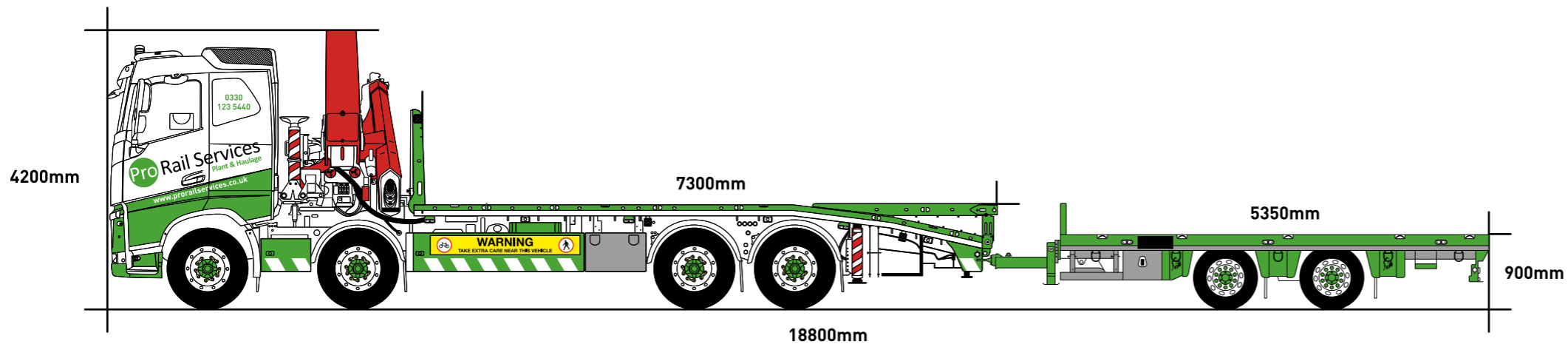
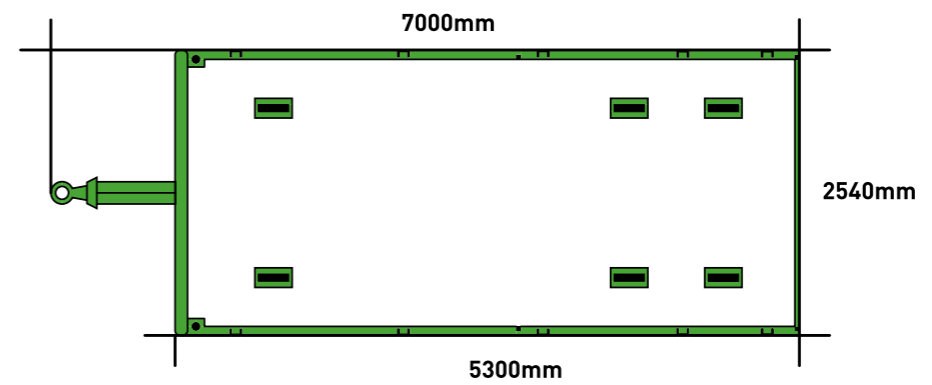
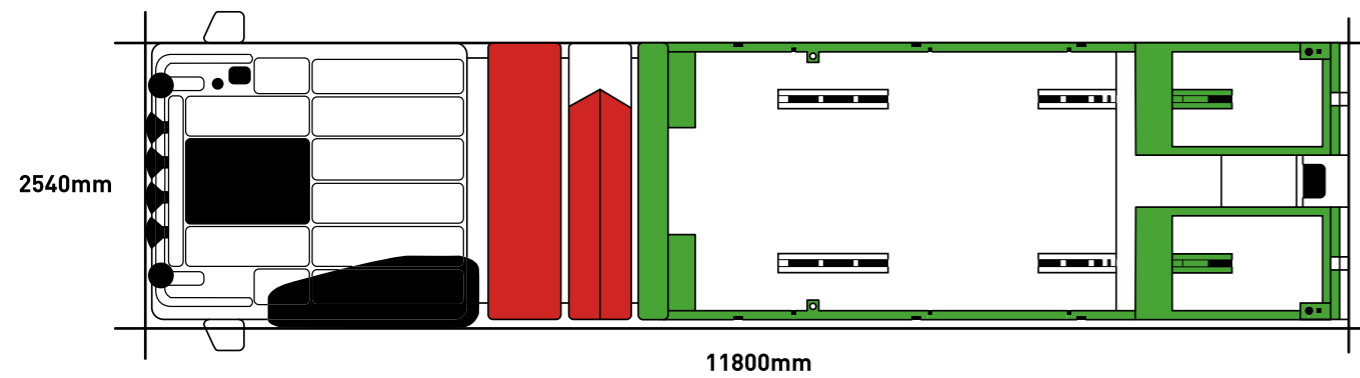
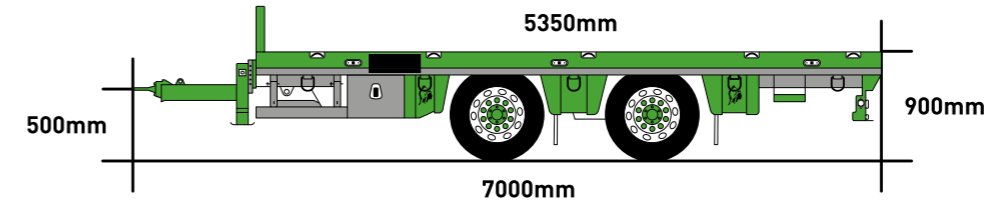
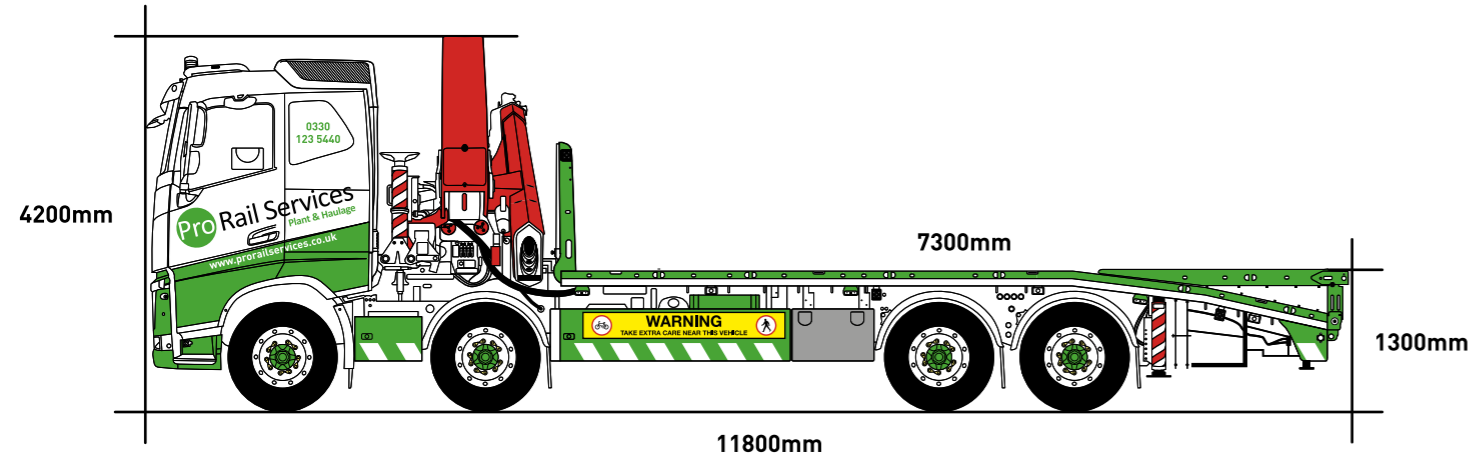
**24**  
HOUR **0330 123 5440**

HAULAGE@PRORAILSERVICES.CO.UK

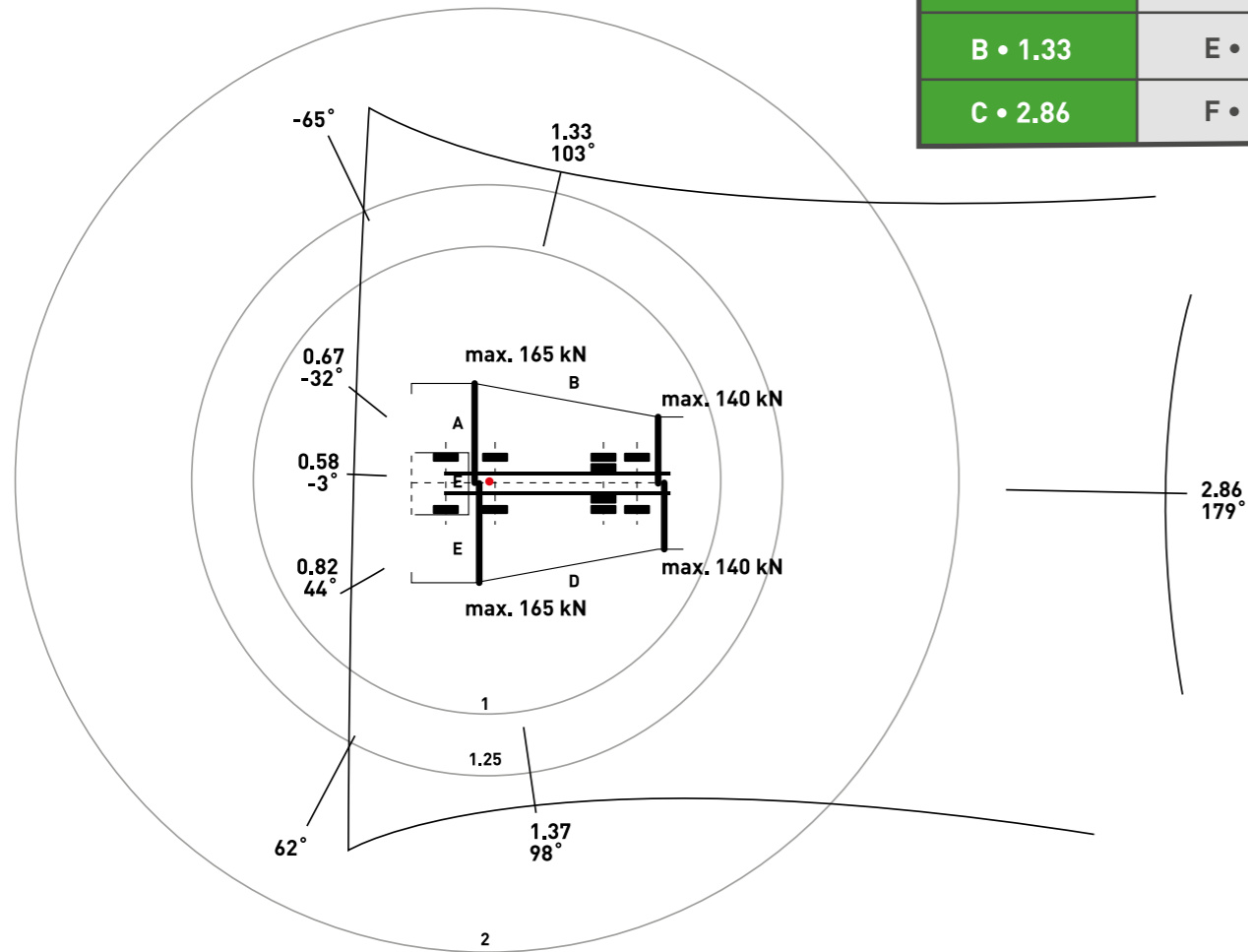




# LORRY & TRAILER DIMENSIONS



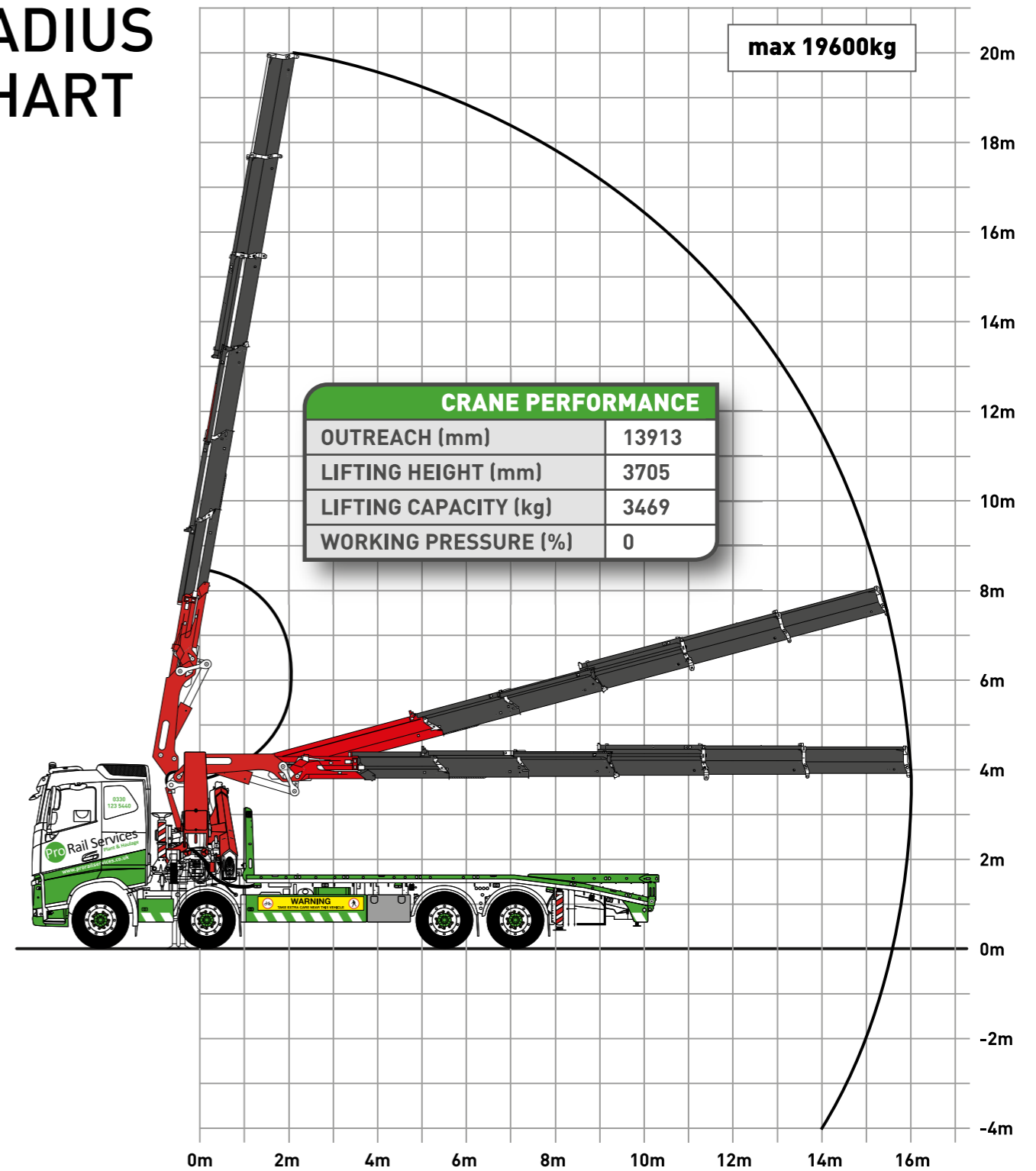
# GROUND PRESSURE



## RESULT

A • 0.67	D: 1.37
B • 1.33	E • 0.82
C • 2.86	F • 0.58

# RADIUS CHART



CRANE PERFORMANCE	
OUTREACH (mm)	13913
LIFTING HEIGHT (mm)	3705
LIFTING CAPACITY (kg)	3469
WORKING PRESSURE (%)	0

# CRANE SPECIFICATIONS

TL	MS (mt)	MT (mt)	D-TR (mm)	D-LC (mm)	W-CI (kg)	D-CWI (mm)	W-CO (kg)	D-CWO (mm)	F
A	35.37	52.97	2503	13495	3496	566	2622	4700	0.67
B	60.68	45.53	3411	12476	4592	3305	1526	5207	1.33
C	93.81	32.84	4814	9506	5166	5728	952	4421	2.86
D	61.02	44.39	3441	12227	4592	3292	1526	4957	1.37
E	35.75	43.82	2526	11381	3496	585	2622	3639	0.82
F	35.11	60.31	2487	15390	3496	553	2622	5319	0.58

WEIGHT CARRIER (KG) • 13340

TL • TIPPING LINE  
 MS • STABILITY MOMENT  
 MT • TIPPING MOMENT  
 D-TR • DISTANCE COG. CARRIER TO TIPPING LINE  
 D-LC • DISTANCE LOAD TO TIPPING LINE

W-CI • CRANE MASS INSIDE TIPPING LINE  
 D-CWI • DISTANCE COG. CRANE MASS INSIDE TO TIPPING LINE  
 W-CO • CRANE MASS OUTSIDE TIPPING LINE  
 D-CWO • DISTANCE COG. CRANE MASS OUTSIDE TO TIPPING LINE  
 F • STAB. FACTOR

## CRANE POSITION LIFTING CAPACITY

ANGLE MAIN BOOM (°)	20
ANGLE KNUCKLE BOOM (°)	20
KNUCKLE BOOM STROKE (mm)	11860
ANGLE FLYJIB (°)	-
FLYJIB STROKE (mm)	-
MANUAL EXTENSIONS	0
LIFTING CAPACITY (kg)	3012
LIFTING CAPACITY OUTREACH (mm)	16086

## CRANE CONFIGURATION

ANGLE MAIN BOOM (°)	0
ANGLE KNUCKLE BOOM (°)	0
KNUCKLE BOOM STROKE (mm)	9460
ANGLE FLYJIB (°)	-
FLYJIB STROKE (mm)	-
MANUAL EXTENSIONS	0
MOUNTING HEIGHT (mm)	1261